



INDIAN SCHOOL MUSCAT

FIRST SUMMATIVE ASSESSMENT – SCIENCE – RETEST

STD: V

MAX MARKS: 60

DATE: 09/10/16

TIME: 2 HRS

Name: _____ Roll No: _____

SECTION – I (MARKS: 20)

(OBJECTIVE TYPE)

SECTION I should be answered in the question paper itself and attach it to the main answer sheet.

Q1. <u>Fill in the blanks:-</u>		(5x1=5)
a) _____ is the purest form of water.		
b) Muscles are attached to the bone by tissues called _____.		
c) During the early stages of germination, the seedling gets food from the _____.		
d) _____ is the undigested part of plant food.		
e) The particles are freely packed in a _____.		
Q2. <u>Choose the correct answer:-</u>		(5x1=5)
a) Which among the following is an immiscible liquid i) Lemon juice ii) honey iii) oil iv) milk		
b) The method that cannot be used to separate common salt from its solution i) evaporation ii) distillation iii) both (i) and (ii) iv)filtration		

c)	The plant dispersed by explosion i) maple ii) peas iii) coconut iv) cocklebur	
d)	The largest part of the brain i) Medulla ii) cerebrum iii) cerebellum iv) brainstem	
e)	Excess intake of fatty foods lead to i) allergy ii) malaria iii) obesity iv) anaemia	
Q3.	<u>Say True or False :-</u>	(5x1=5)
a)	Using body parts for measurement gives accurate values.	
b)	Other than seeds plants can grow from roots, stems and leaves.	
c)	Vaccine decreases our body resistance to diseases.	
d)	Expansion is the increase in the size of matter on heating.	
e)	Ozone layer protects us from harmful ultraviolet rays.	
Q4.	<u>Name the following:-</u>	(5x1=5)
a)	Liquid in which a solid dissolves.	
b)	The instrument used to measure temperature.	
c)	Process in which seeds are scattered away from mother plant.	
d)	Disease caused by deficiency of iodine.	
e)	Process in which special chemicals are added to improve sedimentation rate.	



INDIAN SCHOOL MUSCAT
FIRST SUMMATIVE ASSESSMENT – SCIENCE - RETEST

STD: V

MAX MARKS: 60

DATE: 09/10/16

TIME: 2 HRS

SECTION – II (MARKS: 40)

NOTE: Questions Q5 to Q13 carry one mark each.
Questions Q14 to Q22 carry two marks each.
Questions Q23 and Q25 carry three marks each.
Question Q26 carries four marks.

SECTION II should be answered in a separate answer sheet.

Answer the following in one sentence only:-

- Q5.** Give any two functions of the skeletal system.
- Q6.** Air is a mixture of many gases. Name the gas (i) that controls burning (ii) colorless odorless gas used in light bulbs.
- Q7.** What are the two units used to measure temperature?
- Q8.** Name any two conditions needed for a seed to germinate.
- Q9.** Why water is called a universal solvent?
- Q10.** Electric cables appear to hang loosely from the poles during summer. Why?
- Q11.** Name any two agents that help in spreading diseases.
- Q12.** Geetha looks pale and gets tired easily. What is she suffering from and what causes it?
- Q13.** What should we do to keep our body healthy? (any two)

Answer the following in one or two sentences:-

- Q14.** Aarthi's house is 3 km from her school. Express this in m. (show calculation)
- Q15.** What is reflex action? Which part of the nervous system controls it?
- Q16.** Differentiate between Rabi and kharif crops. Give one example for each.
- Q17.** Draw the arrangement of particles in a (i) solid and (ii) gas.
- Q18.** Name the appropriate units used to measure the following:
- a. thickness of a coin b. length of a room c. juice in a bottle d. water in a water tank
- Q19.** Name the properties of air shown in the pictures below:



A



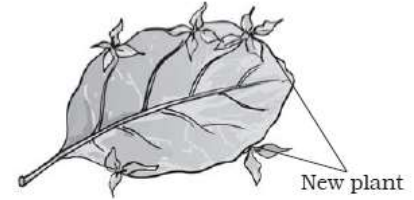
B

- Q20.** Define balanced diet.

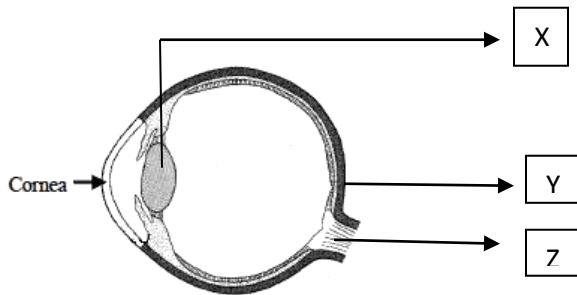
Q21. Classify the following as physical and chemical changes: **a.** making of curd from milk **b.** cooking of food **c.** melting of ice cream **d.** breaking of glass

Q22. What disease does deficiency of Vitamin A cause? Name any two foods rich in vitamin A.

Q23. A. Identify the plant shown in the picture.
B. Name any two plants that grow from stem cutting.
C. What should a farmer do to protect his crops from pests?

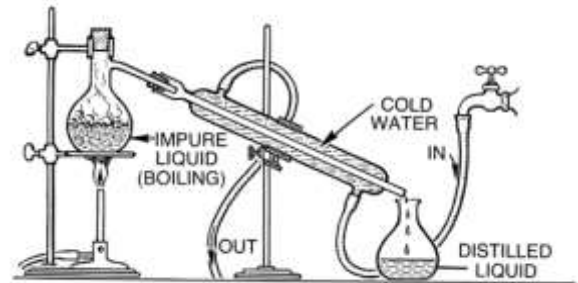


Q24.

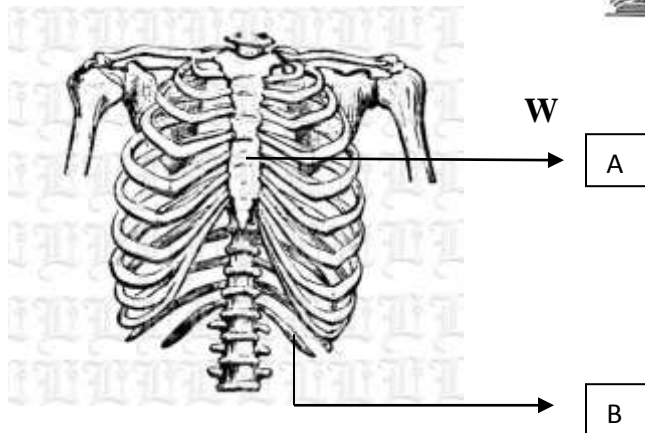


A. Name the parts labeled X and Y **B.** Give the function of the part Z
C. Name the part that gives colour to the eye.

Q25. A) Identify the process shown in the picture.
B) What type of impurities are separated using this method. **C)**What is the advantage of this method over evaporation.



Q26.



I) Identify the part of the skeletal system shown in the picture above. How many bones are there in it?
 II) Name the organs protected by it.
 III) Label the parts marked A and B.